

**Poliovirus Receptor Antibody**  
**Rabbit mAb**  
**Catalog # AP92356****Specification**

---

**Poliovirus Receptor Antibody - Product Information**

Application	WB, IP
Primary Accession	<a href="#">P15151</a>
Clonality	Monoclonal
<b>Other Names</b>	
CD155; HVED; mE4; Necl5; PVR; PVS; Taa1; TAGE4;	
Isotype	Rabbit IgG
Host	Rabbit
Calculated MW	45303 Da

**Poliovirus Receptor Antibody - Additional Information**

Dilution	WB~~1:1000 IP~~N/A
Purification	Affinity-chromatography
Immunogen	A synthesized peptide derived from human Poliovirus Receptor
Description	Mediates NK cell adhesion and triggers NK cell effector functions. Binds two different NK cell receptors: CD96 and CD226. These interactions accumulates at the cell-cell contact site, leading to the formation of a mature immunological synapse between NK cell and target cell.
Storage Condition and Buffer	Rabbit IgG in phosphate buffered saline , pH 7.4, 150mM NaCl, 0.02% sodium azide and 50% glycerol. Store at +4°C short term. Store at -20°C long term. Avoid freeze / thaw cycle.

**Poliovirus Receptor Antibody - Protein Information****Name** PVR**Synonyms** PVS**Function**

Mediates NK cell adhesion and triggers NK cell effector functions. Binds two different NK cell receptors: CD96 and CD226. These interactions accumulates at the cell-cell contact site, leading to the formation of a mature immunological synapse between NK cell and target cell. This may trigger adhesion and secretion of lytic granules and IFN-gamma and activate cytotoxicity of activated NK cells. May also promote NK cell-target cell modular exchange, and PVR transfer to the NK cell. This transfer is more important in some tumor cells expressing a lot of PVR, and may

trigger fratricide NK cell activation, providing tumors with a mechanism of immunoevasion. Plays a role in mediating tumor cell invasion and migration.

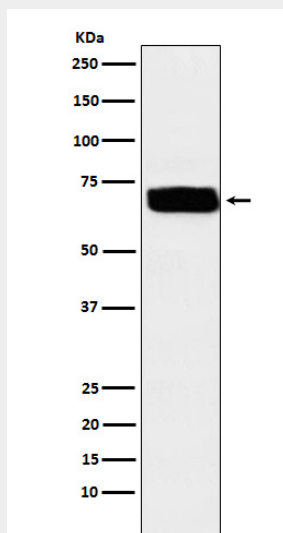
**Cellular Location**

[Isoform Alpha]: Cell membrane; Single-pass type I membrane protein [Isoform Beta]: Secreted.

**Poliovirus Receptor Antibody - Protocols**

Provided below are standard protocols that you may find useful for product applications.

- [Western Blot](#)
- [Blocking Peptides](#)
- [Dot Blot](#)
- [Immunohistochemistry](#)
- [Immunofluorescence](#)
- [Immunoprecipitation](#)
- [Flow Cytometry](#)
- [Cell Culture](#)

**Poliovirus Receptor Antibody - Images**

Western blot analysis of Poliovirus Receptor expression in U87-MG cell lysate.